



Powered Spin Welder Model SW150

General Description

The Branson SW150 is an air-powered inertia spin welding system capable of welding circular parts up to 2" in diameter (based on material being welded). It is easy to set up and operate. The SW150 is designed for use in manual, semi-automated, or fully-automated environments.

The SW150 spin welder is a self-contained plastic assembly system that combines an air motor, process controls, and welding stand in a compact bench unit to conserve work space, facilitate setup and operation as well as to make servicing easy. The SW150 is the ideal "entry level" system for applications that do not require orientation.

Key Features and Benefits

- Air motor capable of 7500 RPM.
- Programmable RPM control and feedback.
- Adjustable downspeed.
- Adjustable hold time: 0 to 10 seconds
- Adjustable height (8"/203.2 mm) and stroke (up to 4"/102 mm) provide ease of setup.

Other Features

- Dual non-tie-down palm buttons with emergency stop to ensure safe operation.
- Ergonomic base



Warranty

The SW150 Powered Spin Welder is warranted to be free from defects one year for parts and one year for labor starting from date of shipment.

Electrical Specifications

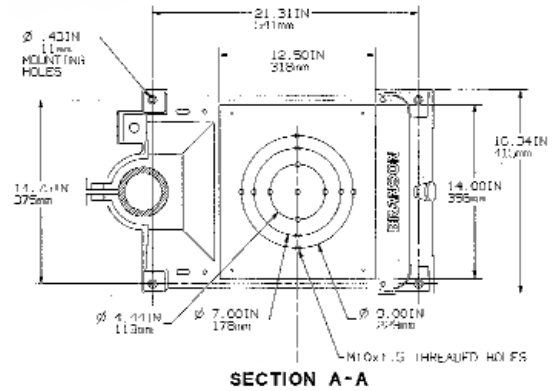
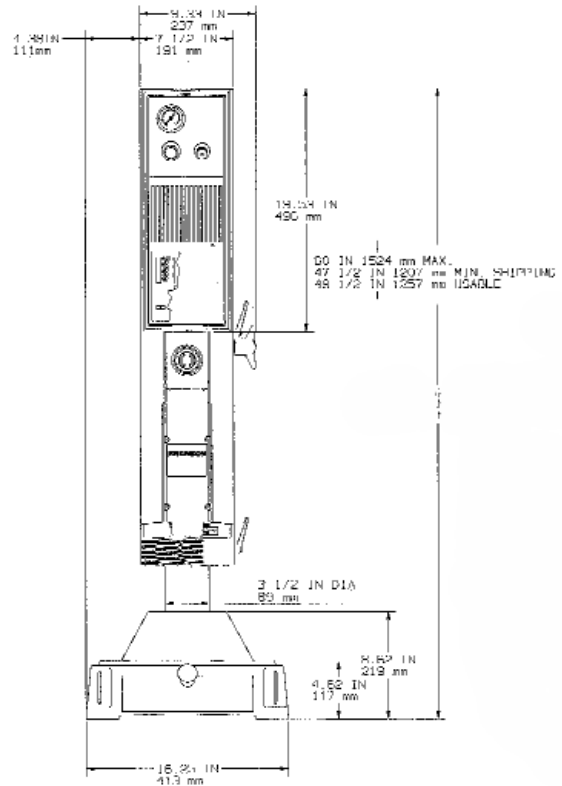
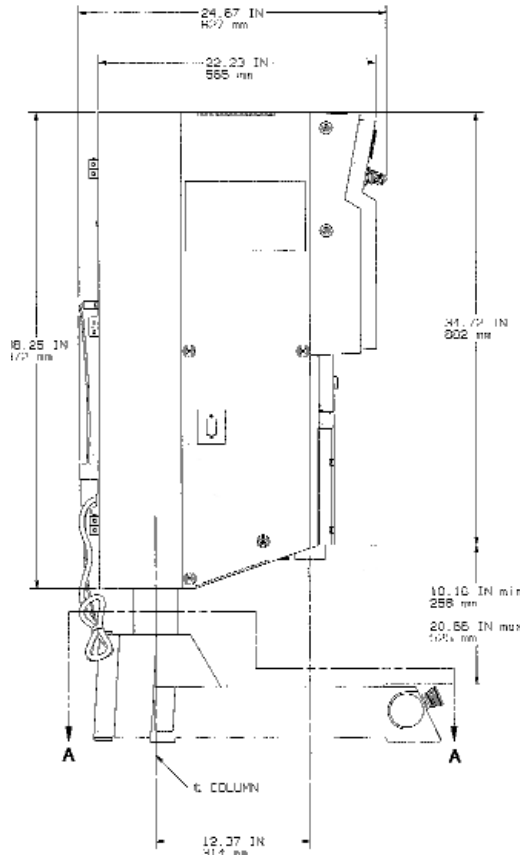
Power requirement: 100-120 V AC,
15 amps, 1-phase,
50/60 Hz

Branson

41 Eagle Road
Danbury, CT
06813-1961
(203) 796-0349
fax (203) 796-9838
email: info@bransonultrasonics.com

Dimensions:

Note: The Model SW150 powered spin welder is designed in USCS units. All dimensions are nominal.

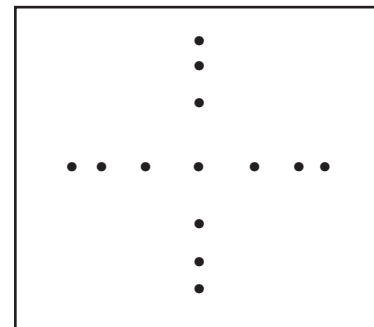


Mechanical Specifications

Weight:	170 lbs. (77 kg)
Stroke length:	4" (102 mm)
Height adjustment:	8" (203.2 mm)
Throat (tooling center-line to column):	12.37" (314 mm)
Distance from bottom of spindle to base :	14.25" (361.95 mm)
Maximum force applied to part:	440 lbs. (1.96 kN)
Pneumatic requirement:	Clean (5 micron), dry air, 80 psi min., 100 psi max.; 20 CFM with minimum hose bore of 5/16"

Mounting hole pattern:

M10 x 1.5 tapped holes on center, and on 112.71, 177.80, and 228.60 mm bolt circles



Ordering Information

Note: All sales shall be subject to the Supplier's terms and conditions of sale as described in Branson's quotations and sales contracts.

Branson EDP No.
300-101-109

Model SW150

Branson Global Headquarters

41 Eagle Road
Danbury, CT
06813-1961

475 Quaker Meeting
House Road
Honeoye Falls, NY
14472

(585) 624-8000
Fax (585) 624-1262