



## Powered Spin Welder Model SW200

### General Description

The Branson SW200 is a precision servo-driven spin welding system capable of welding circular parts with accurate control. It is easy to set up and operate. The SW200 is designed for use in manual, semi-automated, or fully-automated environments.

A free-standing operator interface allows for the following adjustments: revolutions per minute (RPM), revolutions per cycle (RPC), and hold time (HT). The controller also monitors RPMs, RPCs, and motor torque for quality control reporting.

### Key Features and Benefits

New SW200 features:

- Servo drive provides final part orientation within 1°.
- Motor torque monitoring insures consistent weld results.
- Precise RPM control maintains constant velocity.
- Adjustable RPC (revolutions per weld cycle). This provides for consistent weld results.
- Rapid deceleration provides high-strength bonds.
- Adjustable hold time
- Adjustable height (18') and stroke (up to 3.4") provide ease of setup.



### Other Features

- Dual non-tie-down palm buttons with emergency stop to ensure safe operation.
- Ergonomic base

### Warranty

The SW200 Powered Spin Welder is warranted to be free from defects two years for parts and one year for labor starting from date of shipment.

*Applied  
Technologies  
Group*

41 Eagle Road  
Danbury, CT  
06813-1961  
(203) 796-0349  
Fax (203) 796-9838  
Email: info@bransonultrasonics.com

# BRANSON

## Electrical Specifications

Power requirement: 220V AC, 20 amps,  
1-phase, 50/60 Hz

*Note: All specifications subject to change without notice.*

## Mechanical Specifications

Weight:

Stand: 275 lbs. (125 kg)

Operator Interface: 65 lbs. (30 kg)

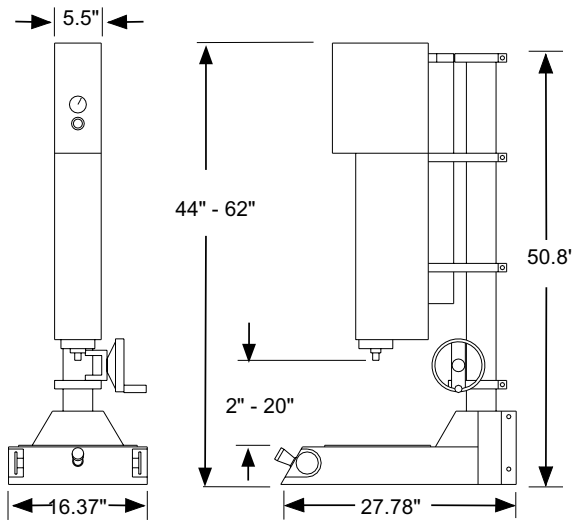
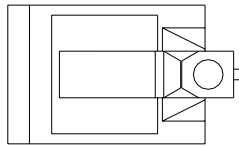
Stroke length: 3.5" (89 mm)

Height adjustment: 18" (457 mm)

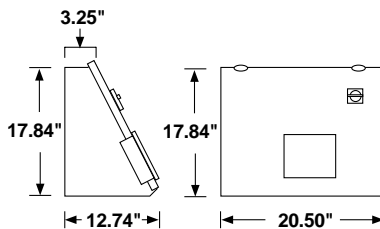
Throat (tooling center-line to column): 10.625" (270 mm)

Drive tool to base distance: 2" to 20" (51 to 508 mm)

Dimensions:



SW200-G Spin Welder



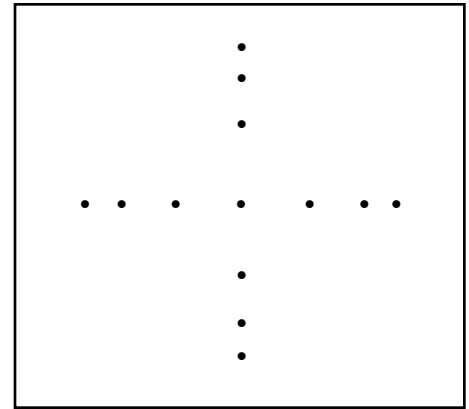
Operator Interface

Maximum force applied to part: 314 lbs. (1.4 kN)  
Pneumatic requirement: Clean (5 micron), dry air, 100 psi max.; 1 CFM

*Note: The Model SW200 powered spin welder is designed in USCS units.*

Mounting hole pattern:

*3/8-16 tapped holes on center, and on 4-7/16", 7", and 9" bolt circles*



## Ordering Information

Model SW200  
Branson EDP No. 300-101-057

*Note: All sales shall be subject to the Supplier's terms and conditions of sale as described in Branson's quotations and sales contracts.*

Branson  
Worldwide  
Headquarters

41 Eagle Road  
Danbury, CT  
06813-1961

475 Quaker Meeting  
House Road  
Honeoye Falls, NY  
14472  
(585) 624-8000  
Fax (585) 624-2682

© Branson Ultrasonics  
Corporation, 1999  
Revised and printed in  
U.S.A.6/99